

## March 27, 1889: Phillips County celebrates 125th

Written by Darci Tomky

---

With humble beginnings on the flat, treeless plains of northeast Colorado, Phillips County celebrates its 125th anniversary Thursday, March 27, while proudly looking back to its history from 1889 to 2014.

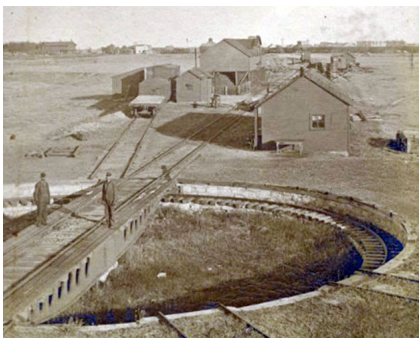
This roughly 688-square-mile chunk of land was once home to buffalo and then cattle herds, which roamed the prairie as the Colorado Territory was introduced in 1861 and Weld County, one of the original 17 Colorado counties, encompassed the entire northeast corner.

Colorado became a state and entered the union Aug. 1, 1876.

Homesteaders began to settle in the Frenchman Creek area in the mid-1880s to claim free land from the United States government through the Homestead Act of 1865. They dotted the prairie with the establishment of their sod houses and began to fence off their land.

Some have observed that this region was settled later than others nearby, probably because there are no rivers.

Logan County was created from a legislative act in February 1887, taking over the northeast corner of Colorado and again encompassing present-day Phillips County.



## March 27, 1889: Phillips County celebrates 125th

Written by Darci Tomky

---

**The Burlington-Missouri Railroad was instrumental in bringing homesteaders to Phillips County. The rail was laid in northeast Colorado in 1887 with a town site every 8-10 miles—Amherst, Holyoke, Paoli and Haxtun. The round house is pictured at the Holyoke train depot.**

Activity really began to take off in the region when the railroad rolled in. More homesteaders came when the Burlington-Missouri Railroad was built from Holdrege, Neb., to Sterling.

Construction commenced in the eastern part of the county in March 1887 and was completed to Sterling in September of that year.

The B&M Railroad provided a town site every 8 to 10 miles along the track. Thus Amherst, Holyoke, Paoli and Haxtun began to take shape and were named by officials of the railroad company.

On March 27, 1889, the eastern section of Logan County was divided to form Sedgwick and Phillips counties.

Phillips County was named in honor of R.O. Phillips, secretary of the Lincoln Land Company that laid out a number of towns in this part of the country, and the 125-year history of Phillips County began.



**Agriculture has always been an important aspect of life in Phillips County, from its 1880s beginnings to today. Sod houses dotted the prairie as settler families took great care to farm the land and raise their livestock.**

### **County government established**

Election precincts were established in Phillips County July 8, 1889, and an election was called for in November.

A week later, county court convened with Judge J.H. Painter on the bench, commencing the judicial system of the county court in Phillips County.

In November 1889, the following county officers were elected:

Commissioners John C. Elder, M. Francis and Theodore Chalbery; Sheriff L.C. Witherbee; Clerk and Recorder C.E. McPherson; Judge James Glynn; Treasurer B.A. Hoskins; Assessor Otis Castetter; Superintendent of Schools Charles B. Timberlake; Surveyor William Lowe; and Coroner L.P. Lewis.

Holyoke was named the county seat.

# March 27, 1889: Phillips County celebrates 125th

Written by Darci Tomky

---

